

**K YACHTS**



 **180-2**

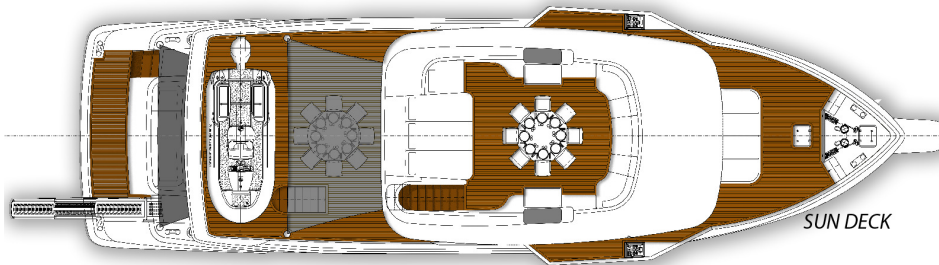
**SHORT SPECIFICATION**

# GENERAL ARRANGEMENT

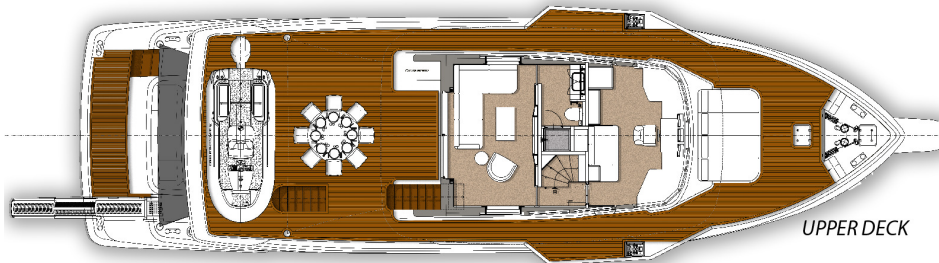
180-2



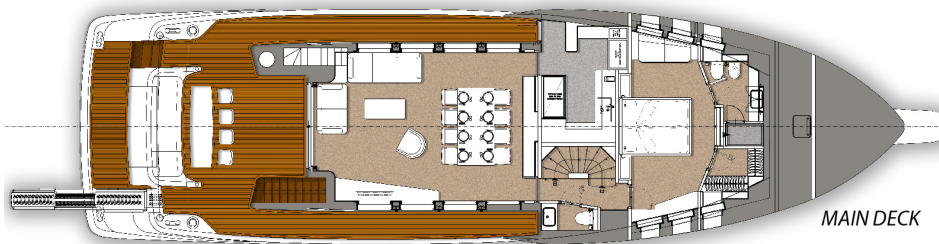
EXTERNAL VIEW



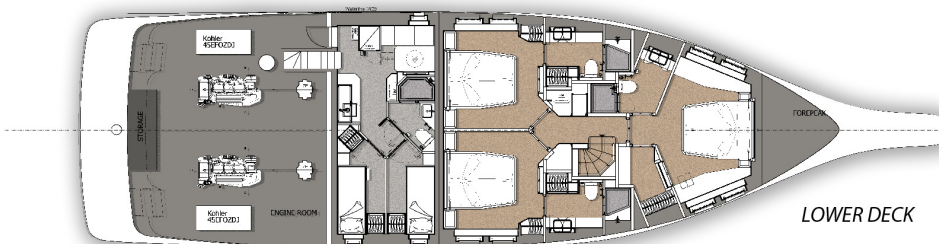
SUN DECK



UPPER DECK



MAIN DECK



LOWER DECK





## MAIN CHARACTERISTICS

---

### DIMENSION

Construction	Steel / Aluminium
Classification	CE
Flag	TBD
Length Overall	26.00 m
Length Water Line	23.80 m
Moulded Beam	7.30 m
Maximum Beam	7.60 m
Moulded Depth	3.75 m
Gross Tonnage	180 GT

---

### DISPLACEMENT, SPEED AND RANGE

Displacement at Full Load	189 tons
Trial Displacement	174 tons
Draught (full load under keel)	2.20 m
Maximum Speed	11.00 knots
Cruising Speed	9.00 knots
Economical Speed	8.00 knots
Fuel Capacity	28800 lt
Fresh Water Capacity	3300 lt
Range at Cruising Speed	4300 nm
Range at Economical Speed	5300 nm

---

### MACHINERY

Main Engine	2 x MAN D2676LE435
Main Engine Power	2x 412 kW at 2100 rpm
Propulsion System	V- Drive-Shaft line, Fixed Pitch Propeller
Main Generator	2 x 45 KWe KOHLER 45EFOZDJ -400V / 50 Hz
Stabiliser System	Underway and zero speed CMC Electric STAB40
Bow Thruster	CMC Electric 30 KW
Air conditioning	VECO 130000 Btu/h-Fan Coil System
Fresh water maker	IDROMAR 1x 180 l/h
Fuel purifier	Alfa Laval 1x 1000 l/h

---

### ACCOMMODATION

Guest	8 pp / 4 Cabins
Crew	4 pp / 2 Cabins

---

### GENERAL INFORMATION

Naval Architecture	Yachting Expertise
Exterior Designer	A. Vallicelli & C. Yacht Design
Interior Designer	TBD

