

K YACHTS



 **450-1**

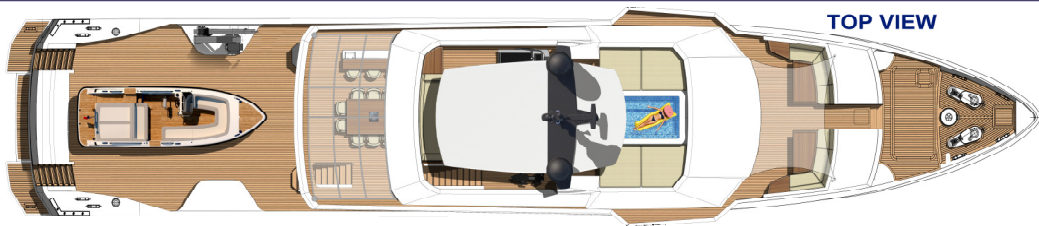
SHORT SPECIFICATION



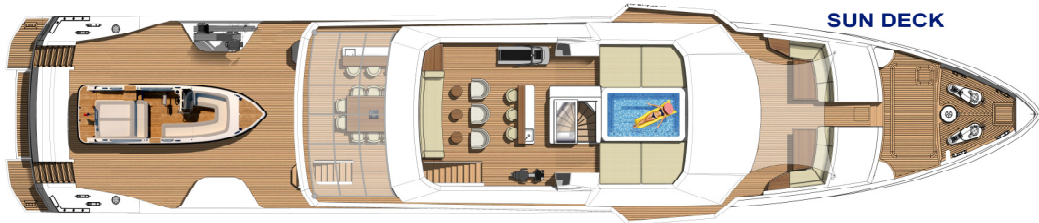
**YACHTING
EXPERTISE**

GENERAL ARRANGEMENT

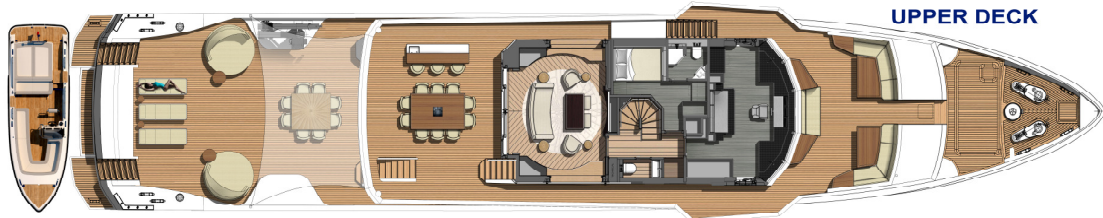
450-1



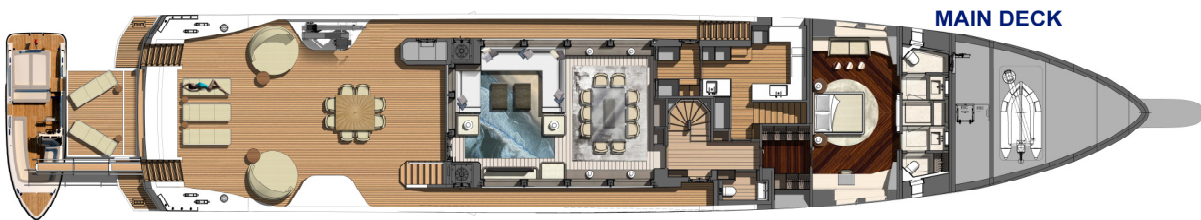
TOP VIEW



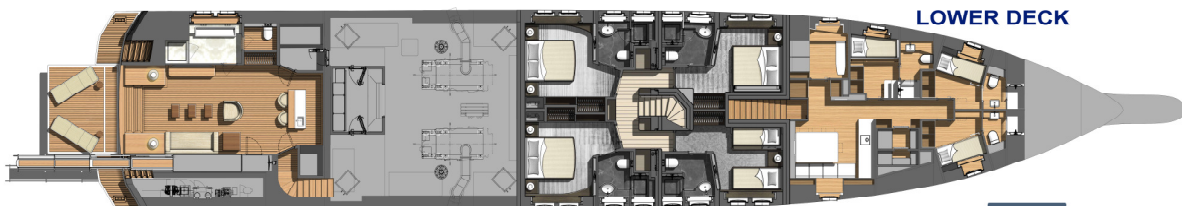
SUN DECK



UPPER DECK



MAIN DECK



LOWER DECK



Alexandre Thiriat





MAIN CHARACTERISTICS

DIMENSION

Construction	Steel / Aluminium
Classification	RINA – Registro Italiano Navale C, ✕HULL, ● MACH, YCH Unrestricted Navigation, AUT-UMS(Y)
Compliance	REG CODE
Length Overall	45.20 m
Length Water Line	42.10 m
Moulded Beam	8.30 m
Maximum Beam	8.95 m
Moulded Depth	4.20 m
Gross Tonnage	435 GT

DISPLACEMENT, SPEED AND RANGE

Displacement at Full Load	425 tons
Displacement at Half Load	392 tons
Draught (full load under keel)	2.40 m
Maximum Speed	15.00 knots
Cruising Speed	12.50 knots
Economical Speed	10.00 knots
Fuel Capacity	65000 lt
Fresh Water Capacity	10000 lt
Range at Cruising Speed	4000 nm
Range at Economical Speed	6000 nm

MACHINERY

Main Engine	2 x MAN D2862 LE428
Main Engine Power	2x 749 kW at 2100 rpm
Propulsion System	Shaft line, Fixed Pitch Propeller
Main Generator	2 x 100 KWe KOHLER 100EFOZDJ -400V / 50 Hz
Stabiliser System	Underway and zero speed CMC Electric
Bow Thruster	Electric 75 KW
Fan coil Cooling System	Accommodation and Engine room

ACCOMMODATION

Guest	10 pp / 5 Cabins
Crew	9 pp / 5 Cabins

GENERAL INFORMATION

Naval Architecture	Yachting Expertise
Exterior Designer	A. Vallicelli & C. Yacht Design
Interior Designer	Alexandre Thiriat

